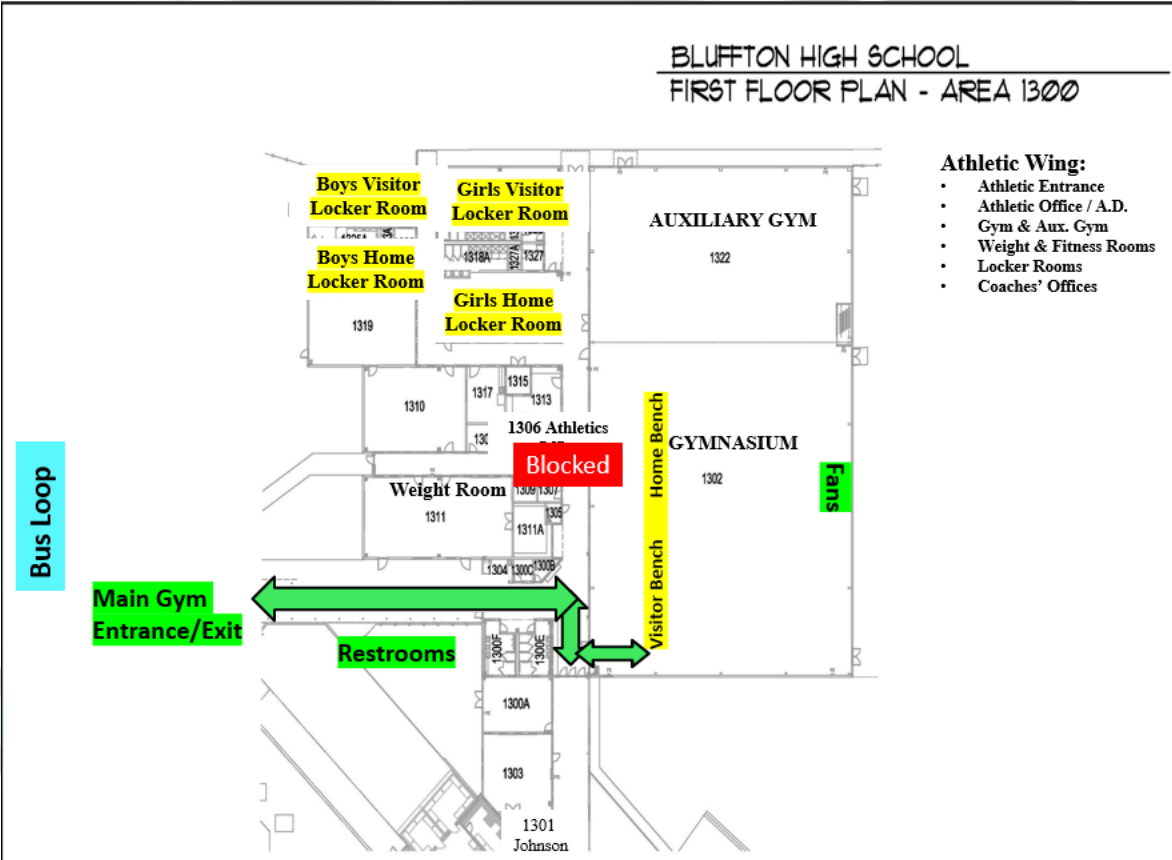
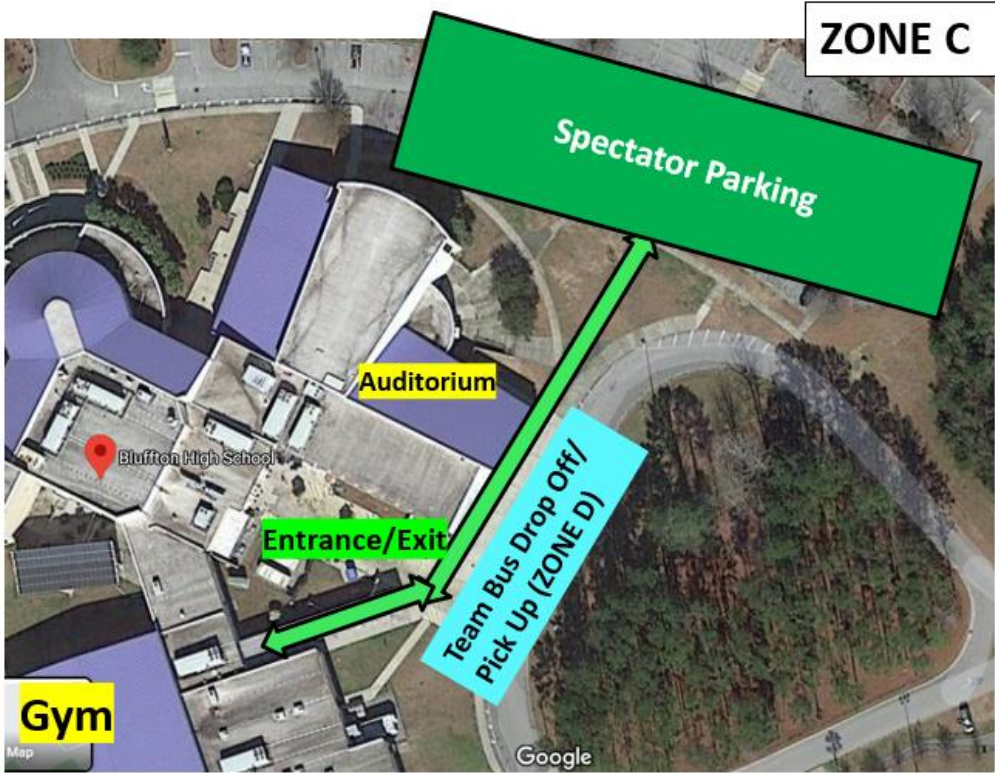


Volleyball Matches at Bluffton High School (Spectators)



Home/Visitor Spectators Notes:

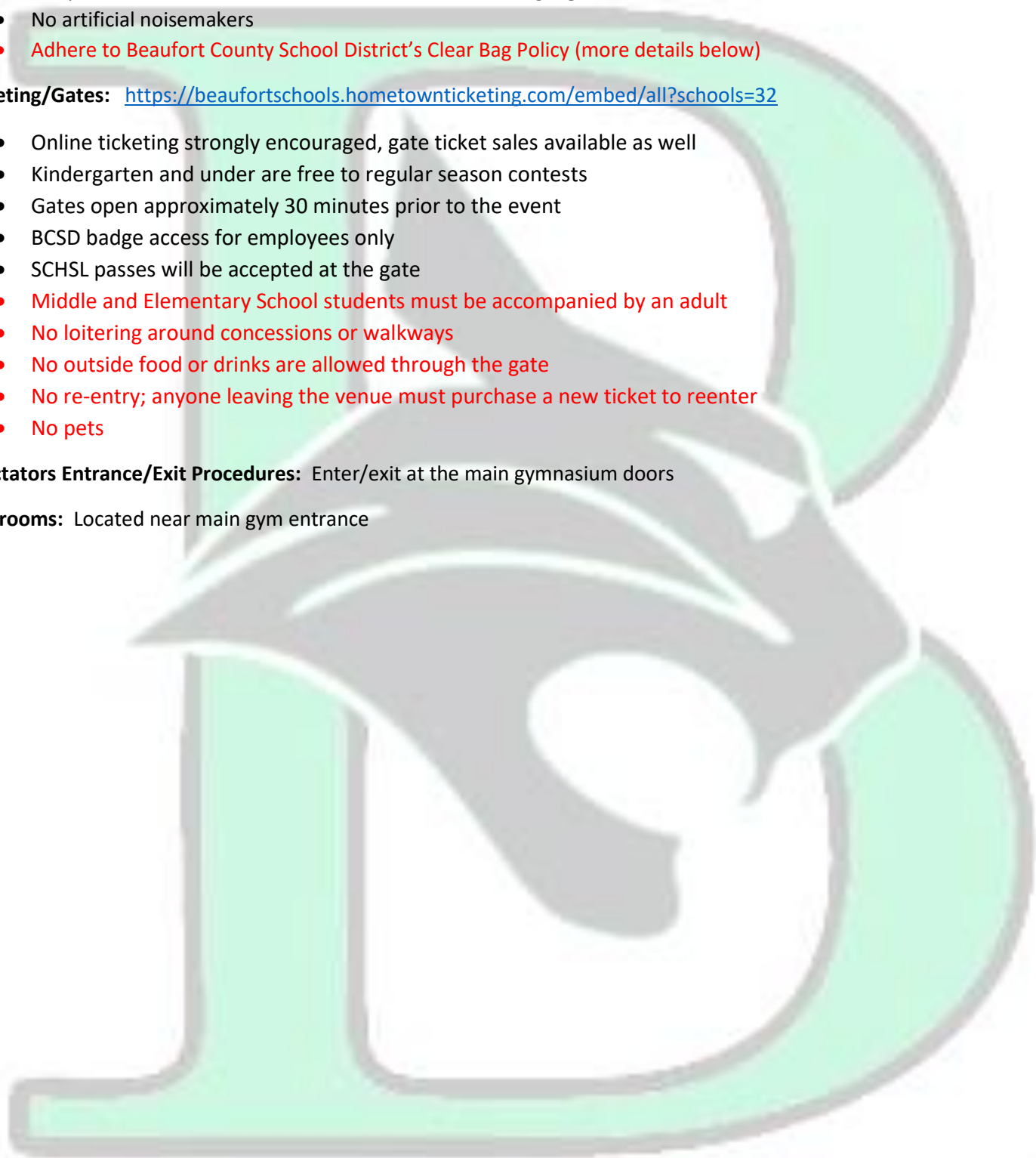
- Parking--Park in "ZONE C" lot off H.E. McCracken Circle
- Spectator seating: Fans sit in bleachers on the opposite side of the team benches
- All spectators must adhere to PA announcements and signage
- No artificial noisemakers
- Adhere to Beaufort County School District's Clear Bag Policy (more details below)

Ticketing/Gates: <https://beaufortschools.hometownticketing.com/embed/all?schools=32>

- Online ticketing strongly encouraged, gate ticket sales available as well
- Kindergarten and under are free to regular season contests
- Gates open approximately 30 minutes prior to the event
- BCSD badge access for employees only
- SCHSL passes will be accepted at the gate
- Middle and Elementary School students must be accompanied by an adult
- No loitering around concessions or walkways
- No outside food or drinks are allowed through the gate
- No re-entry; anyone leaving the venue must purchase a new ticket to reenter
- No pets

Spectators Entrance/Exit Procedures: Enter/exit at the main gymnasium doors

Restrooms: Located near main gym entrance





Clear Bag/No Bag Policy

Approved bags include — Clear Tote (12" x 6" x 12"),
1 Gallon Clear Plastic storage bag, Small Clutch
with wrist strap (not to exceed 4.5" x 6.5")

